



iBisbee Committee
118 Arizona Street
Bisbee, AZ 85603

Wednesday, August 20, 2014 at 6:00 p.m.

Agenda

THE ORDER OR DELETION OF ANY ITEM ON THIS AGENDA IS SUBJECT TO MODIFICATION AT THE MEETING.

6:00 p.m. Call to Order

Roll Call:

Stanley Stern, Chair
Fred Miller, Vice-Chair
Elias Jouen
Scott Ries

Carrie Gustavson
Peter Goldlust
Kathy Sowden

Douglas Dunn, City Council Liaison

Joe Ward, Staff Liaison

CALL TO THE PUBLIC – For items not currently on the agenda.

Item 1:

Discussion Only, Teleconference Presentation from Emily Gojkovich, Economic Development Planner for the Southwest New Mexico Council of Governments, on the Promise Zone.

Discussion Only, a teleconference presentation from Emily Gojkovich, Economic Development Planner for the Southwest New Mexico Council of Governments, regarding the Promise Zone, a Federal HUD (Housing and Urban Development) program. <https://www.onecpd.info/promise-zones/>

Stanley Stern, Chair and Emily Gojkovich, Economic Development Planner, Southwest New Mexico Council of Governments.

Item 2:

Discussion Only, A'kos Kovach Revisits the Grants Discussion With More Depth For Urban Development.

Discussion Only, A'kos Kovach revisits the grants discussion with more depth for urban development.

Stanley Stern, Chair and A'kos Kovach

Item 3:

Discussion and Possible Action, Follow Up Rebranding Campaign With A Possible Recommendation to City Manager.

Discussion and Possible Action, follow up on the Rebranding Campaign with a possible recommendation to City Manager.

Stanley Stern, Chair

Item 4:

Discussion Only, Follow Up On Previous iBisbee Action Items Senior Assisted Living Facility and Airport Rezoning.

Discussions only, follow up on previous iBisbee action items: Senior Assisted Living Facility and Airport rezoning.

Stanley Stern, Chair

POTENTIAL AGENDA ITEMS FOR NEXT MEETING:

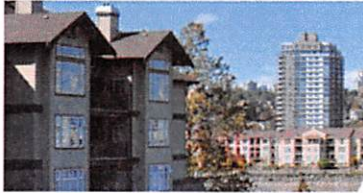
STAFF COMMENTS:

MEMBER'S COMMENTS (NOT OPEN FOR DISCUSSION):

ADJOURNMENT:

Next Regular Meeting: Wednesday, September 17, 2014 at 6:00 p.m.

PERSONS NEEDING SPECIAL ACCOMMODATIONS TO ATTEND THIS MEETING SHOULD CONTACT CORINNA CARBAJAL, COMMITTEE LIAISON, AT (520) 432-6016, AT LEAST TWENTY-FOUR HOURS BEFORE THE MEETING.



PROMISE ZONES

This tool assists applicants to HUD's Promise Zone initiative prepare data to submit with their application by allowing applicants to draw the exact location of the area they intend to serve. For more information on the Promise Zone initiative, visit <https://www.onecpd.info/promise-zones>. To begin, click on the "Sign Up" or "Log In" buttons below, or choose "Instructions" for help on using the tool.

Enter an Address, city or state

Select a State Select a County

Poverty Legend

- Poverty 0-10%
- Poverty 10-20%
- Poverty 20-30%
- Poverty 30-100%

Legend

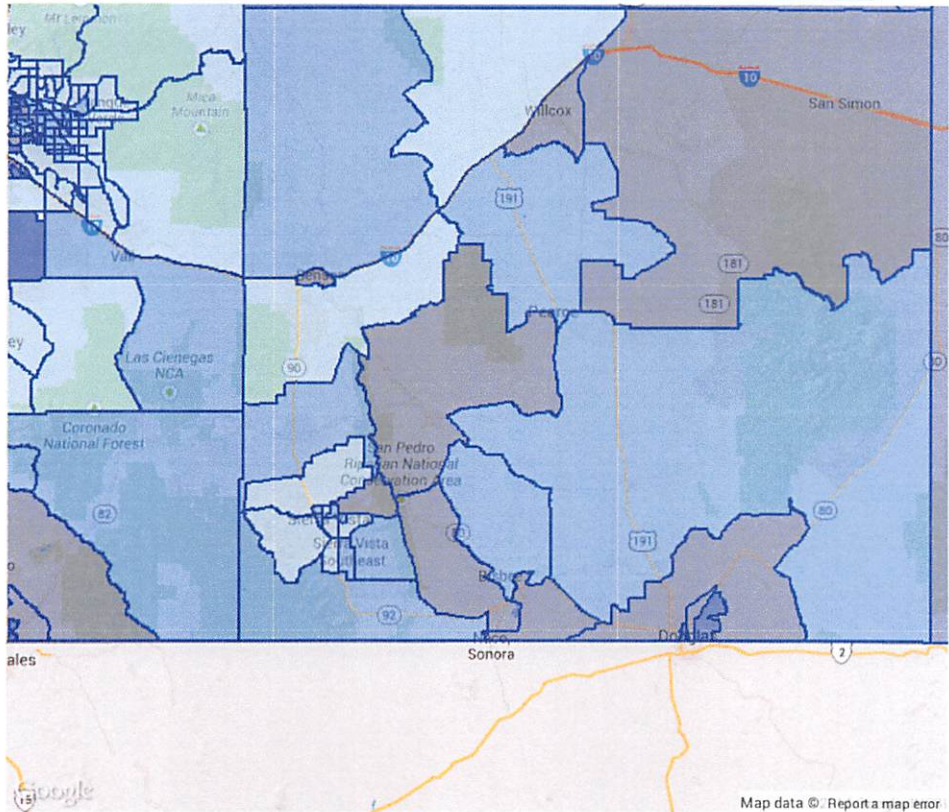
[Clear Map](#)

Promise Zone Options

- 9 Current Zoom Level
- Show Tribal Areas (Zoom 6+)
- Show Counties (Zoom 6+)
- Show Tracts (Zoom 9+)
- Show Poverty (Zoom 9+)
- Show Block Groups (Zoom 12+)

The mapping tool is populated by a large amount of data. After clicking these polygon guides, please wait for data to load before clicking on additional buttons. Also, after clicking "DRAW" you have to re-enable the optional layers if you need them as a guide to draw your shape.

[INSTRUCTIONS](#)





PROMISE ZONES

This tool assists applicants to HUD's Promise Zone initiative prepare data to submit with their application by allowing applicants to draw the exact location of the area they intend to serve. For more information on the Promise Zone initiative, visit <https://www.onecpd.info/promise-zones>. To begin, click on the "Sign Up" or "Log In" buttons below, or choose "Instructions" for help on using the tool.

Enter an Address, city or state

Select a State Select a County

Legend

[Clear Map](#)

Poverty Legend

- Poverty 0-10%
- Poverty 10-20%
- Poverty 20-30%
- Poverty 30-100%

Promise Zone Options

- 11 Current Zoom Level
- Show Tribal Areas (Zoom 6+)
- Show Counties (Zoom 6+)
- Show Tracts (Zoom 9+)
- Show Poverty (Zoom 9+)
- Show Block Groups (Zoom 12+)

The mapping tool is populated by a large amount of data. After clicking these polygon guides, please wait for data to load before clicking on additional buttons. Also, after clicking "DRAW" you have to re-enable the optional layers if you need them as a guide to draw your shape.

[INSTRUCTIONS](#)

